



**ACE
INTERNATIONAL**

**PERSONAL PROTECTIVE EQUIPMENT
2018 - 2019**

ACE INTERNATIONAL is your privileged partner to provide you the equipment adapted to your needs taking into account your site conditions and environment. We intervene in **Oil & Gas sector**, and **Industrial sectors** including **manufacturing, construction**, etc.. Our mission is to listen to your needs in order to answer as fast as possible and satisfy your requirements in quality and service. **ACE INTERNATIONAL** is a family business based in China (Suzhou & Shanghai) and in Australia (Sydney).

We started the company in 2007; Our mission was to source the **best quality products in Asia for our international clients**. After few years of success, we decided to specialise in PPE and safety equipment. We are official distributor of **top brands** and producer of safety products. Our main markets are Asia, Europe and Africa. After many years aware of the needs of our clients, we launched our brand **ACE® Clothing, ACE® Gloves** and **ACE® Glasses**.

Our aim is to add more products that can bring update always safety solutions for our clients. Our products follow **international standards** and **certified** to assure the best quality. On the web-site, you will find our wide range of Personal Protective Equipment and other safety equipment as Collective Protective Equipment including safety signs, First aid Kit, anti-Slip solutions, Cleaning face and others useful equipment to protect you in your site environment.



N° 1 in Safety Equipment distribution
N° 1 dans la distribution d'équipement de sécurité
N° 1 in der verteilung der sicherheitseinrichtungen
N° 1 em distribuição do equipamentos de segurança
N° 1 в снабжённыe оборудованиe безопасности
N° 1 en la distribución de equipamiento de seguridad
N° 1 nella fornitura d' equipaggiamento di sicurezza
 安全防护设备**行业领先**单位

1 Quality Certified



2 R&D Design and Product Dev.



3 Production OEM



4 Warehousing Logistics



5 Showroom and Office



6 Customer Services



INDEX

HEAD PROTECTION

4

FACE PROTECTION

5 - 7

EYE PROTECTION

8 - 12

EAR PROTECTION

13 - 16

RESPIRATORY PROTECTION

17 - 24

HAND PROTECTION

25 - 33

SAFETY SHOES

34 - 38

FALL PROTECTION

39 - 47

BODY PROTECTION

48 - 66

BAGS

67 - 68

CLEANING ACCESORIES

69 - 70

LIFE JACKET

71 - 73

GRANITE WIND REF : GRANITEWING

**Description:**

Ventilated ABS safety helmet. Mountain helmet style : without visor for the best vertical vision. Less encumbrance. Light. Innovative textile harness for extra comfort. Thermoformed sweat band. Innovative adjustable ROTOR® system (patented) : head sizes 53 to 63 cm. Sold with 3 fixing points chin strap.

Materials:

ABS

Weight : 355 g

Sizes: Adjustable

Colours: Black, Blue, Orange, Red, White, Yellow

CE EN397

WINTER CAP REF : WINTERCAP

**Description:**

Lining placed inside the helmet. Accessory for extreme cold protection, easy to remove. User instructions included. Suitable for our range of helmets.

Materials:

Outside: artificial leather.

Inside: artificial plush (100%polyester.)

Sizes: Adjustable

Colours: Black

CE

VISOR HOLD-MINI
REF : VISORHOLDMINI



Description:

Faceshield holder suitable for GRANITE WIND safety helmets. To combine with VISORPCMINI and VISORGMINI.

Materials:

ABS

Weight: 160 g

CE EN166

SUPERVIZOR
REF : SUPERVIZOR



Description :

Compatible with wide range of helmet designs (size, shape and geometry) • Visor fixing method is secure and allows easy visor replacement • Creased visor eliminates gaps and visor profile follows contours of the face for maximum protection, allowing full unrestricted head movement • Visor selection can be tailored to the specific hazard/application: mechanical, chemical, heat etc • A robust, heavy-duty, helmet mounted faceshield range with hearing protection compatibility

CE EN166

VISORTORIC
REF : VISORTORIC



Description:

Clear polycarbonate injected visor. Thickness 1,9/2,0 mm. Electric Arc protection. Universal fixing. Suitable for faceshield holder VISOR HOLDER and VIROR H (BALB2 and PICO2 support). 39 x 20 cm.

Materials:

Polycarbonate

162 g

Sizes: Single

Colours: Colourless

CE EN170 EN166

BARRIER REF : BARRIER



Description:

Helmet for electric arc welding, MIG, TIG that requires DIN9 to DIN13 protection. Polypropylene. Sweat band. Headband with easy ratchet adjustment. Vision shield : 100 x 60 mm. LCD filter included. Shades : Clear : DIN4 - Dark : DIN9 to DIN13. Sensitivity : 0,0003s. (Clear shade to dark shade). Powered by solar cells and 2 replaceable lithium batteries included.

Materials:

Polypropylene
LCD lens

Colours: Blue

CE EN166 EN379 EN175

BALBI2 REF : BALBI2



Description:

Faceshield with front protection + VISORPC visor : clear polycarbonate visor with plastic edge. 39 x 20 cm.

Materials:

Polycarbonate

Sizes: Single

Colours: Yellow

CE EN166

MSA HELMET REF : MSA HELMET



Description:

Classic original "v" shape, ensuring excellent resistance to impact and puncture resistance; Use high-quality raw materials, regardless of the PE or ABS materials all materials. Extended visor design, additional shading effect, reducing glare, dust-proof and dirt, chemicals and so on, enhanced eye protection and face;

Material: ABS

Sizes: Adjustable

Colours: orange, red, blue, yellow, white

CE

HELMET LINER

REF : HELMET LINER



Description:

Applicable to industry of electric power, chemicals, mining, construction, geological and transportation machinery, and other industries. Hoods can be used with any helmets GB2811-2007 standards;

Sizes: Single

Colours: Black

EN166 EN 367

NECK WARMER

REF : NECK WARMER



Description:

Windproof winter cycling outdoors in winter special days, face covered when it is cold; it can also be pulled down, pulled up to the Chin or nose, based on actual usage changes. Can also be used as a hat and a scarf. used to protect the face and neck, soft, comfortable. It can be used when you ride bicycles, skiing, mountain climbing and other outdoor sports.

Sizes: Single

Colours: height 25cm width 25cm



BRAVA2 REF : BRAVA 2



Description:

Single lens polycarbonate glasses, soft flat spatula type arms, integrated polycarbonate nose piece. Easy to use with safety helmet and ear defender. Lateral protection. Scratch-resistant.

* Available in:

- Clear flash lens version (UV400), reference : BRAVA2LM. Comply with EN170 (UV) standard.

- Colourless lens version (UV400), reference: BRAVA2IN. Comply with EN170 (UV) standards.

- Yellow version (UV400), reference : BRAVA2JA. Comply with EN170 (UV) standards.

- Smoke lens version (UV400), reference : BRAVA2FU. Comply with EN172 (solar protection) standards.

- Smoke flash lens version (UV400), reference : BRAVA2FF. Comply with EN172 (solar protection) standards.

Materials :

Frame and lens : polycarbonate

Weight : 25 g

Sizes: Single

Colours: Colourless, Flash, Honey, Smoked, Yellow



EN166 EN170 EN172 ANSI Z87+

VULCANO2 REF : VULCANO2



Description:

Polycarbonate single lens glasses. Adjustable and tilting nylon arms. Spatula tips. Extra comfort integrated PVC nose piece. Side protection. UV400, scratch-resistant and anti-mist.

Available in :

Colourless lens version, Ref. : VULC2ORIN. Comply with EN170 (UV) standards.

Smoke lens version, Ref. : VULC2NOFU. Comply with EN172 (solar protection) standards.

Materials:

Arms: nylon

Lens : polycarbonate

Weight: 26 g

Sizes: Single

Colours: Black, Orange-coloured / Grey



EN166 EN170 EN172 ANSI Z87+

MEGA CLEAR REF : MEGAIN



Description:

Clear single lens polycarbonate deep cover goggles. Direct side ventilation. Lateral protections. Eyelet for cord. Scratch-resistant.

Materials:

Polycarbonate

Weight : 55 g

Sizes: Single

Colours: Colourless



EN166 EN170 ANSI Z87+

PITON2 CLEAR FOR VISITORS REF : PITON2



Description:

Single lens polycarbonate glasses, direct side ventilation. Lateral protection. Eyelet for cord. Clear lens version, ref : LUCERNEIN

Materials :

Polycarbonate

Weight : 45 g

Sizes: Single

Colours: Colourless

CE EN166 EN170

KILIMANDJARO REF : KILIMANDJARO



Description:

Single lens polycarbonate glasses. Adjustable temple. Adjustable inclination. Lateral protection.

Available in :

- Colourless lens version, scratch-resistant, UV400 : Ref. KILIMGRIN, comply with EN170 (UV) standards.

- Smoke lens version, scratch-resistant, UV400: Ref. KILIMNOFU100, comply with EN172 (solar protection) standards.

- Colourless lens version, anti-mist, scratch-resistant, UV400 : Ref. KILIMGRINAB, comply with EN170 (UV) .

Materials:

Polycarbonate

Weight 32 g

Sizes: Single

Colours: Colourless, Smoked

CE EN166 EN170 EN172 ANSI Z87+

RUIZ2 REF : RUIZ2



Description :

Clear polycarbonate goggle. Flexible PVC frame. Indirect ventilation by 4 ventilators. Woven elastic strap.

Materials :

Frame: Flexible PVC.

Screen: polycarbonate.

Weight : 86 gr

Sizes: Adjustable

Colours: Colourless

CE EN166

BLOW SMOKE GRADIENT REF : BLOW



Description:

Ergonomical glasses. Polycarbonate screen. Twin-material arms. Elasticated tips. Anti-slip soft PVC nose piece. "soft confort" removable lens for dust protection. UV400, Scratch-resistant.

Available in :

Grey frame, smoke lenses anti-mist, ref. BLOWGRFU, comply with EN172 (solar protection)
Incolor frame, gradient smoke lenses, ref. BLOWINFG, comply with EN172 (solar protection)

Materials:

Polycarbonate

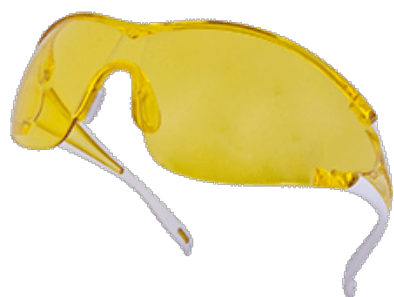
Weight : 34 g

Sizes: Single

Colours: Flash, Smoked

CE EN166 EN172

EGON REF : EGON



Description:

Ergonomic glasses. Polycarbonate lens. Sports look. Twin material arms. Extra comfort soft PVC nose piece.

Available in:

- Clear flash lens version, reference : EGONROLM. Comply with EN170 (UV) standard.
- Clear lens version, reference: EGONGRIN. Comply with EN170 (UV) standard.
- Yellow lens version, reference : EGONBCJA. Comply with EN170 (UV) standard.
- Smoke lens version, reference : EGONGRFU. Comply with EN172 (solar protection) standard.

Materials:

Frame and lens : polycarbonate.

Sizes: Single

Colours: Colourless, Flash, Smoked, Yellow

CE EN166 EN170 EN172

LIPARI2 T5 REF : LIPARI2 T5



Description :

Polycarbonate single lens glasses. Adjustable and tilting nylon arms. Spatula tips. Extra comfort integrated PVC nose piece. Side protection. UV400, scratch-resistant and anti-mist.

Available in :

Colourless lens version, ref. : LIPA2BLIN. Comply with EN170 (UV) standards.
Welder lens version: ref. : LIPA2T5. Comply with EN169 (welder) standards.

Materials: Sides : nylon Lens: polycarbonate

Weight : 34 g

Sizes: Single

Colours: Colourless - Shade 5

CE EN66 EN169 EN170

SALINA REF : SALINA

**Description :**

Ultra light single lens polycarbonate glasses. Extra fine metal frame. Non-slip PVC tips. Adjustable PVC nose piece. Available in : Brown/grey frame, smoked brown screen, ref. SALIFU, comply with EN172 (solar protection) standards.

Materials: Polycarbonate

Weight : 26 g

Sizes: Single

Colours: Smoked

CE EN172 EN166

KILAUEA MIRROR REF : KILAUEA MIRROR

**Description :**

Polycarbonate glasses. Sport design. Nylon frame with matt finish for better comfort and durability

Materials: Polycarbonate and Nylon

Weight : 28 g

Sizes: Single

Colours: Mirror

CE EN172 EN166

TACANASPORT REF : TACANASPORT

**Description:**

Clear polycarbonate goggles. Indirect ventilation. Comfortable flexible frame. Panoramic screen. Adapted to the wearing of corrective glasses and disposable respiratory half-masks. Wide elastic strap.

Materials:

Frame : PVC

Screen : polycarbonate

Sizes: Adjustable

Colours: Transparent

CE EN166



Description :

Safety glasses composed by a single lens in Polycarbonate and adjustable temples in nylon. Soft nosepad integrated. Lateral protection. These spectacles are designed to be used only mounted on Deltaplus industrial safety helmets models: QUARTZ UP, ZIRCON, GRANITE and BASEBALL DIAMOND. Not to be used alone. AVAILABLE IN: Colourless lens version, reference: FUEGOARIN. Comply with EN166 & EN170 (UV) standards. Adjustable arms. UV400. Anti-mist. Anti-scratch.

Materials: Lens material : polycarbonate

Frame material:

nylon Nose pad: TPR

Weight: 35 gr

Sizes: Single

Colours: Aluminium-coloured

CE EN166 EN170

SUZUKA2

REF : SUZUKA2



Description:

Ear defender for safety helmets. Adjustable in height. High flexibility ABS arm and cups. PVC cups padded with synthetic foam. To use alone or with VISOR HOLDER faceshield holder. Suitable for QUARTZ, ZIRCON, GRANITE PEAK and BASEBALL DIAMOND safety helmets. SNR = 27 dB.

Materials:

Cup & headband: ABS
Cushion: Foam & PVC
Weight : 257 g

Sizes: Adjustable, Single

Colours: Black, Fluorescent Yellow



INTERLAGOS

REF : INTERLAGOS



Description:

Ear defender with ABS cups. Pads filled with synthetic foam. Double plastic headband (POM), adjustable in height, with soft and ventilated reinforcement for a better comfort. SNR : 33 dB.

Materials:

Cup: ABS / Pads: Foam / Headband: POM
Weight : 278 g

Sizes: Adjustable

Colours: Fluorescent Yellow, Grey



PITBOARD

REF : PITBOARD



Description:

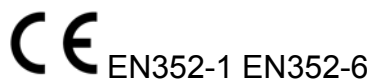
Electronic ear defender with ABS cups. Adjustable steel and sponge headband, ultra comfort. 1 button to adjust the volume on each cup for right/left use separately. Walkie-talkie system: allows to choose the communication channel (8 channels and 38 sub-channels available). Maximum reception distance: 3 km. Hunting system : amplification of voices and then warning signals, to avoid the risk of isolation in the workplace. System of amplification shuts off automatically and reverts to passive earmuff mode, in the case of impulsive noise which reaches 80/82 dB. Works with Lithium battery (3.7V/800mA) .

Materials:

Cup: ABS / Outside cushion: PVC / Inside cushion: PU + Sponge / Headband: Manganese Steel / Headband cushion : PU + PUC + Sponge
Weight (batteries included): 500 g

Sizes: Adjustable

Colours: Black



MAGNETHELMET

REF : MAGNETHELMET



Description:

Ear defenders for safety helmets. Adjustable in height. ABS arm and cups. Cups padded with synthetic foam. To use alone or with «VISOR HOLDER» faceshield holder. Suitable for QUARTZ, ZIRCON, GRANITE PEAK and BASEBALL DIAMOND V safety helmets. SNR = 32 dB.

Materials:

Cup & headband: ABS

Cushion: Foam & PVC

Weight : 370 g

Sizes: Single

Colours: Grey



SPA3

REF : SPA3



Description:

Ear defender with polystyrene (PS) and synthetic foam cups. ABS headband, adjustable in height. Low pressure. SNR : 28 dB.

Materials:

Cup: Polystyrene (PS) / Cushion: Foam / Headband: ABS

Weight : 158 g

Sizes: Adjustable

Colours: Blue / Black



CONIC200

REF : CONIC200



Description:

Distributor of 200 pairs of disposable earplugs packed in individual plastic bags by pairs.

Materials:

Polyurethane foam

Colours: Yellow



CONICDIS
REF : CONICDIS



Description :

Dispenser for disposable earplugs with reload of 500 earplugs Ref. CONIC500

Materials:

Polyurethane foam rubber.

Colours: Blue

CE EN352-2

CONICCO200
REF : CONICO200



Description:

Dispenser box of 200 pairs disposable polyurethane earplugs with plastic cord. Individual plastic bag of 2 earplugs.

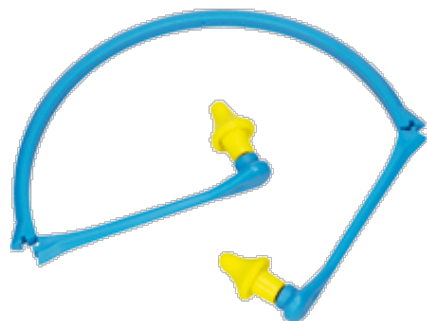
Materials:

Polyurethane foam

Colours: Yellow

CE EN352-2

CONICAP01
REF : CONICAP01



Description:

Polyurethane foam earplugs, reusable, linked with a polypropylene folding head fastener which can be worn under the chin. Easy to tidy out, this product is perfect to be worn sporadically or occasionally. Packed in individual box.

Materials:

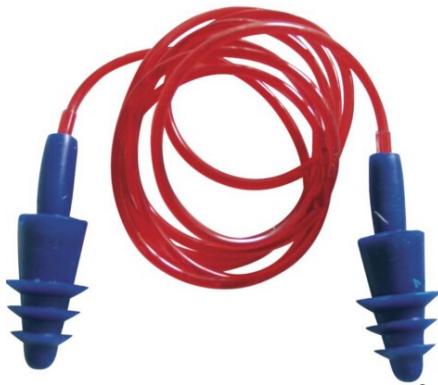
Polyurethane foam and polypropylene head fastener.

Weight: 15 g

Colours: Yellow / Black

CE EN352-2

CONICFIT010
REF : CONICFIT010



Description :

Bag of 10 boxes of reusable silicone ear plug with nylon cord / ø7-11 mm (9 pairs in bag + 1 pair in storage plastic box)

Materials:

Flexible silicone. Nylon cord

Weight : 3 g

Colours: Navy Blue / Red

CE EN352-2

REFLECTIVE BAND EARMUFF
REF : REFLECTIVE BAND EARMUFF



Description:

Waterproof cloth

Package: reflective fabric, Structure styles: rear-mounted, folding, adjustable size

Materials:

Fabric composition: 100% polyester

Bone arm: sub-zero Frost crack 40% bracket

Sizes: 35-40cm

CE

M1200VPW
REF : M1200VPW



Description:

Hypoallergenic to active charcoal non woven synthetic fibre filtering part FFP2 organic vapor (for concentration < VME). Nose clip for adjustment. Foam reinforcement under nose clip. Exhalation valve high performance. Foldable mask. Box of 10.

Materials:

Mask: non-woven synthetic.
Straps : Rubber

Colours: Grey

CE EN149

M1300VC
REF : M1300VC



Description:

Non woven synthetic fibre facial filtering part FFP3. Set of large adjustable straps. Moulded mask. Nose clip for adjustment. Integral ultra-soft facing joint. Exhalation valve high performance. Box of 5.

Materials:

Mask: non-woven synthetic.
Set of large adjustable straps

Colours: White

CE EN149

M1100C
REF : M1100C



Description:

Box of 20 non woven synthetic fibre disposable mask FFP1. Moulded mask. Nose clip for adjustment. Foam edge under nose clip.

Materials:

Non-woven synthetic fibre.
Straps : Rubber

Colours: White

CE EN149 N95

1300VPC
REF : 1300VPC



Description:

Non woven synthetic fibre facial filtering part FFP3. Set of large adjustable straps. Nose clip for adjustment. Integral ultra-soft facing joint. Exhalation valve high performance. Foldable mask. Distributor box of 10.

Materials:

Mask: non-woven synthetic.
 Set of large adjustable straps

Colours: White

CE EN149

M1300SM
REF : 1300SM



Description:

Reusable FFP3 dust mask. Reusable moulded mask shell in TPE shell. Replaceable non woven synthetic fibre disposable filter. Innovative system that reduces cost and optimizes comfort. High performance exhalation valve that serves to change the filter layer like a screw. Adjustable straps. Back fixing with clip. Sold by 1 box of 1 reusable moulded mask shell + 20 FFP3 spare disposable filters.

Materials:

Non woven,
 Moulded mask in TPE

Sizes: Single

Colours: Blue

CE EN149

M1200SM
REF : M1200SM



Description:

Reusable FFP2 dust mask. Reusable moulded mask shell in TPE shell. Replaceable non woven synthetic fibre disposable filter. Innovative system that reduces cost and optimizes comfort. High performance exhalation valve that serves to change the filter layer like a screw. Adjustable straps. Back fixing with clip. Sold by 1 box of 1 reusable moulded mask shell + 20 FFP2 spare disposable filters.

Materials:

Non woven,
 Moulded mask in TPE

Sizes: Single

Colours: Blue

CE EN149

3M 9001V
REF : 3M9001V



Description:

Non-Woven Fabric+filter+needle punched filtering part FFP2. Moulded mask. Nose clip for adjustment.

Materials:

Non woven fabric

Sizes: Single

Colours: White

CE N90 FFP2

M6200
REF : M6200



Description:

Thermo-plastic elastomer half mask (TPE). Elastic straps. Intended for 2 filtering cartridges of M6000 serie, sold separately.

Materials:

Half-mask : TPE.
Elasticated straps

Sizes: Single

Colours: Blue

CE EN140

M9200
REF : M9200



Description:

Silicone full face mask with innovative ROTOR® system adjustment (patented), one-hand use even when wearing gloves. Wide polycarbonate screen (210°). Inside silicone half-mask to reduce mist and increase comfort (3 inhalation valves, an exhalation valve, phonic system). Adjustable sizes : S, M, L. Compatible with EN148-1 type cartridges M9000 range, sold separately. Storage bag included.

Materials:

Silicone

Sizes: Adjustable

Colours: Black / Blue

CE EN136

M6100
REF : M6100



Description:

Comfort half mask in tri-material : Half mask body in Thermo-plastic Elastomer (TPE) - Support for cartridge anchorage in polyethylene HD (HDPE) - Valve protective housing in polypropylene (PP). Elastic straps. To be used with 1 filter cartridges: M6000P3, M6000PREP3 or M6000A1, sold separately. Blister packaging.

Materials:

Half mask body : Thermo-plastic Elastomer (TPE)
Support for cartridge anchorage i: polyethylene HD (HDPE)
Valve protective housing : polypropylene (PP)

Sizes: Adjustable

Colours: Blue

CE EN140

3M 7502 FULL SET
REF : 3M 7502



Description:

A set including: 1pcs main part 7502+2pcs of cartridges 6001+2pcs of filter discs 5N11+2pcs plastic ring 501

Function: Prevent Dust \ organic gas and steam-like benzene and its homologues such as gasoline, acetone, carbon disulfide, ether, etc.

Application: apply to painting, laboratories, chemical pesticide, medical, printing, molding, car repair painting mix above used poisonous gas environment.

CE China LA, US NIOSH certificate

3M 3200 FULL SET
REF : 3M 3200



Description:

One set including: 1pcs of mask 3200CN+1pcs of cartridge 3001+1pcs of filter disc 3N11CN+1pcs of plastic ring 385CN

Material:

rubber

Function: Effective protection of organic gases and steam, such as benzene and its homologues, gasoline and carbon dioxide

Application: used for mixing paint, spray paint and organic steam generated in the process of respiratory protection

CE China LA certificate

3M 6200 FULL SET
REF : 3M 6200



Description:

This half facepiece reusable respirator offers reliable and convenient respiratory protection and is suitable for many situations, helping provide protection against particulates and a wide variety of gases and vapors according to NIOSH approvals. This series combines comfort and convenience. Comfortable soft, lightweight facepiece with easy-to-adjust head straps. NIOSH approved for negative pressure air purifying and supplied air dual airline applications. Can be disassembled, cleaned and reused

Materials:

Plastic cup and activated charcoal

Sizes: Medium



3M 3200 FULL SET
REF : M6000P2



Description:

The 3M™ Reusable Half Face Mask Respirator 3200. Features include: An elastomeric face seal, M/L in size, it is a compact and lightweight half mask that offers an economical solution for a range of applications. Low profile design allows a wide field of vision. Lightweight makes long period of wear bearable. Soft, elastomeric face-fit secures a lasting comfort. Unique easy to don/doff strap system

Sizes: Medium



M6200
REF : M6200



Description : Thermo-plastic elastomer half mask (TPE). Elastic straps. Intended for 2 filtering cartridges of M6000 serie, sold separately.

Materials: Half-mask : TPE. Elasticated straps

Sizes: Single

Colours: Blue



M6300
REF : M6300



Description: Half mask in PP and TPE equipped with an adjustable elastic head harness in Dacron and Lactoprene and an exhalation valve in silicone. The half mask is equipped with one special bayonet connector including an inhalation valve in silicone (detailed description in EC type examination report 15.7.031.001)
Materials: Half-mask : silicone Elasticated straps

Sizes: Single

Colours: Black

CE EN 136

M6000P2
REF : M6000P2



Description:
 Pack of 2 P2 filtering cartridges for M6200-JUPITER half-mask.

Materials:
 Plastic cup and activated charcoal

Sizes: Single

Colours: White

CE EN143/A1

M6000P3
REF : M6000P3



Description:
 Pack of 2 P3 filtering cartridges for M6200-JUPITER half-mask.

Materials:
 Plastic cup and activated charcoal

Sizes: Single

Colours: White

Ref: M6000P3

CE EN143/A1

M6000A2
REF : M6000A2



Description:

Pack of 2 A2 average capacity filtering cartridges for M6200-JUPITER half-mask.

Materials:

Plastic cup and activated charcoal

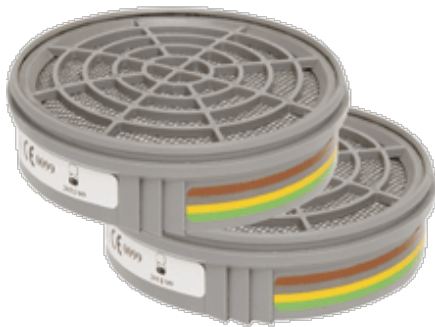
Sizes: Single

Colours: Brown

Ref: M6000A2

CE EN14387

M6000ABEK1
REF : M6000ABEK1



Description:

Pack of 2 A2 small capacity filtering cartridges for M6200-JUPITER half-mask.

Materials:

Plastic cup and activated charcoal

Sizes: Single

Colours: Brown / Grey / Yellow / Green

Ref: M6000ABEK1

CE EN14387

M9000A2R
REF : M9000A2R



Description:

Filter cartridge of average capacity A2 for complete masks series M8000 and M9000

Materials:

Synthetic resin case, highly resistant to shocks and abrasions

Colours: Grey

CE EN148-1 EN14387

M9000 A2B2E2K2
REF : M9000 A2B2E2K2



Description:

Filter cartridge of average capacity A2B2E2K2 for complete masks series M8000 and M9000.

Materials:

Synthetic resin case highly resistant to shocks and abrasions.

Colours: Brown / Grey / Yellow / Green

CE EN148-1 EN14387

FP159
REF : FP159



Description:

Pigskin full grain leather glove, American cut, wing thumb, leather grain complete second finger, elasticated back, coloured border.

Materials:

Glove: pigskin leather grain, thickness : 0.7 mm to 0.9 mm.

Sizes: 09, 10

Colours: Buff

CE EN388

NI155
REF : NI 155



Description:

Full nitrile-coated glove on jersey cotton support, ribbed cuff, thickness: 1.40 mm to 1.60 mm.

Materials:

Glove : 100% nitrile-coated and vulcanized (latex acrylonitrile butadiene).
Cotton jersey lining.
Knitted wrist cotton 250 g/m².

Sizes: 10

Colours: Blue

CE EN388

NI015
REF : NI015



Description:

Nitrile-coated glove on cotton jersey support, ventilated back, ribbed cuffs, thickness: 0.8 mm.

Materials:

Glove: 100% nitrile-coated and vulcanized (latex acrylonitrile butadiene). Cotton jersey lining.
Knitted wrist cotton.

Sizes: 07, 08, 09, 10, 11

Colours: Yellow

CE EN388

VE330
REF : VE330



Description:

Reinforced Natural latex glove for cleaning applications, bi-coloured double dipping, cotton flock lining, grip-pattern palm and fingers, indented cuff, length: 30 cm, thickness: 0.60 mm. Bacteriostatic and fungistatic additive.

Materials:

100% natural latex, yellow and blue shade.
100% cotton

Sizes: 6/7, 7/8, 8/9, 9/10

Colours: Blue / Yellow

CE EN388 EN374-3 CATIII

V1371
REF : V1371



Description:

Dispenser box with 100 ambidextrous gloves, powdered with cornstarch. Suitable for contact with food. Thickness: 0.125mm, AQL 1.5.

Materials:

100% vinyl (PVC).

Sizes: 6/7, 7/8, 8/9, 9/10

Colours: Transparent

CE EN374-2 EN374-1

V1310
REF : V1310



Description:

Dispenser box with 100 latex ambidextrous gloves, powdered with cornstarch. Suitable for contact with food. Thickness: 0.125 mm. Cornstarch-powdering, AQL 1.5.

Materials:

100% natural latex.

Sizes: 6/7, 7/8, 8/9

Colours: Natural

CE EN374-2 EN374-3

PVCC400
REF : PVCC400



Description:

Chemical PVC glove. PVC on cotton jersey lining. Length: 40 cm. Thickness: 1,3 mm.

Materials:

Glove: 100% PVC vulcanized and coated on cotton jersey support.
 Thickness : 1,20 - 1,40 mm

Sizes: 10

Colours: Red

CE EN388 EN374-3 EN374-2 CATIII

VE530
REF : VE530



Description:

Neoprene and latex blended glove, cotton flock lining, grip-pattern palm and fingers, indented cuff. Length: 30 cm and thickness: 0,70 mm. Bacteriostatic and fungistatic additive. Chlorinated outside.

Materials:

100% neoprene and latex, navy blue shade.
 100% cotton flock lining

Sizes: 6/7, 7/8, 8/9, 9/10, 10/11

Colours: Navy Blue

CE EN388 EN374-3 CATIII

VE630
REF : VE630



Description:

Seamless knitted glove. 100% polyester. Latex coating on palm and fingertips. Gauge 13.

Materials:

Glove : 100% polyester
 Coating: 100% natural latex

Sizes: 07, 08, 09, 10

Colours: Grey

CE EN388

VE702P
REF : VE702P



Description:

100% polyester, seamless. Polyurethane coating on palm and fingertips. Gauge 13. Colour-elasticated cuff .

Materials:

100% polyester
Coating : 100% polyurethane

Sizes: 06, 07, 08, 09, 10

Colours: White

CE EN388

VE712GR
REF : VE712GR



Description:

Seamless 100% polyester knitted glove. Nitril-coated palm and fingertips (ventilated back). Elasticated cuff.

Materials:

100% polyester knit. Coating : 100% nitril.

Sizes: 07, 08, 09, 10

Colours: Grey

CE EN388

VE722NO
REF : VE722NO



Description:

Seamless 100% polyester knitted glove. Foam nitrile coating on palm and fingertips. Gauge 13.

Materials:

Glove : 100% polyester.
Coated : 100 % nitrile foam.

Sizes: 07, 08, 09, 10

Colours: Grey / Black

CE EN388

VV750
REF : V750



Description:

Seamless knitted glove. Outside : 100% polyamide gauge 13. Inside : 100% acrylic gauge 7. 3/4 nitrile foam-coated on palm, fingers and half back.

Materials:

Glove : polyamide / acrylic.
Coating : nitrile foam

Sizes: 09, 10

Colours: Black

CE EN388 EN511

VE790
REF : VE790



Description:

Seamless polyamide/carbon knitted glove. Polyurethane coating on palm and fingertips (ventilated back). Gauge 13. Elasticated wrist.

Materials:

Knitted polyamide/carbon. Coating : 100% PU.

Sizes: 07, 08, 09

Colours: White

CE EN388 EN1149-1

VE802
REF : VE802



Description:

Nitrile glove, finishing coated free of silicone, cotton flock lining, grip-pattern palm and fingers, straight cuff. Length: 33 cm, thickness: 0.40 mm. Chlorinated outside.

Materials:

100% nitrile (latex acrylonitrile butadiene: NBR) - Green shade.
Cotton flock lining

Sizes: 6/7, 7/8, 8/9, 9/10, 10/11

Colours: Green

CE EN388 EN374-3 EN374-2 CATIII

VE920
REF : VE920



Description:

Natural latex glove on jersey (Interlock) cotton support. Smooth exterior. Straight cuff. Length: 30 cm and thickness: 1,25 mm. Bacteriostatic and fungistatic treatment. Chlorinated outside and inside.

Materials:

100% natural latex, blue coloured - cotton support

Sizes: 6/7, 7/8, 8/9, 9/10, 10/11

Colours: Blue

CE EN388 EN374-3 EN407 CATIII

VENICUT50
REF : VECUT50



Description:

Seamless knitted glove. TAEKI® 5 High performance polyethylene fibre. Cowhide on palm and fingertips. Gauge 10.

Materials:

Synthetic fibre TAEKI 5 (high performance)
Cowhide leather

Sizes: 09, 10

Colours: Yellow / Grey

CE EN388 EN407

VENICUT54
REF : VECUT54



Description:

Seamless knitted glove. TAEKI® 5 High performance polyethylene fibre. Nitrile coating on palm, fingers and half back. Gauge 13.

Materials:

Synthetic fibre TAEKI 5 (high performance)
Coated : 100% nitril.

Sizes: 07, 08, 09, 10

Colours: Black

CE EN388 EN407

DS202RP
REF : DS202RP



Description:

Lined cowhide Docker glove, American cut, artery protection, blue-leathered strengthening piece on index, cowhide complete fingertips, cowhide strengthening piece on back, white cotton cloth back and cuff, blue cowhide strengthening piece on palm and thumb, elasticated back, piping to protect seams on thumb and palm, cloth-lined palm and fingers.

Materials:

Palm : cowhide, thickness: 0.9 mm to 1.1 mm. Reinforcement : cowhide split thickness between 0.9 and 1.1 mm. Back : white canvas cotton 150 g/m². Cuff : white cotton 220 g/m².

Sizes: 10

Colours: Grey / Blue

CE EN388

CA515R
REF : CA515R



Description:

Welder's glove. Heat-resistant cowhide split leather (HR). Hand with cotton fleece lining. Cuff with canvas lining. American assembly. Length : 35 cm.

Materials:

Heat-resistant leather, thickness: 1.2mm to 1.4mm.
Lined hand : swansdown.
Lined cuff : cotton cloth 300 g/m².

Sizes: 10

Colours: Red

CE EN388 EN407 EN12477

VV900
REF : VV900



Description:

Glove with Polyester/polyurethane back. PVC reinforcements. Polyamide/polyurethane palm with PVC dots. 8 cm cuff in neoprene.

Materials:

Palm : Polyamid/polyurethane microfibre.

Dots : PVC.

Back : Polyester/polyurethane knitted.

Back reinforcement : PVC

Cuff : Neoprene.

Sizes: 08, 09, 10, 11

Colours: Yellow / Grey

CE EN388 EN1621-2

VV903
REF : VV903



Description:

Polyester back coated with polyurethane. Polyurethane/polyester palm. Neoprene cuff. 3M Thinsulate™ lining: Resistant to cold. Repellent back.

Materials:

See description.

Sizes: 07, 09, 11

Colours: Grey / Black

CE EN388

WONDER GRIP
REF : WONDER GRIP



Description: protective waterproof non-slip

Low temperature of 25 degrees

Operating environment: winter, outdoor, low temperature, cold, damp-warm environment

Features:

1. ergonomic hand designed to improve operating comfort and sensitivity, reduce fatigue
2. Palm impregnated and double dipping using a special premium finish technology, grip strength better and superior slip resistance 3. dip designed to prevent air and water infiltration, adapt to various types of low-temperature and humidity environments 4. Advanced 13-pin acrylic seamless loop knitting technique, gloves with excellent thermal properties

Brand: wonder grip

Colours: Orange

Lining: acrylic, Dipping: double LaTeX immersed

Size: S M L XL

CE

GLOVE CLIP

REF : GLOVE CLIP

**Description:**

Ergonomic design, gently pinch to open, release and close. Easy to use, a grip gloves, on the belt loop of a clip on your belt or pants, easy access at any time, Save gloves, can ensure that workers do not readily use gloves discarded. High elastic, grip work, let your gloves are always on your side.

Materials: Plastic

Sizes: Total length: 13cm

Colours: Grey / Black



GARGAS2S1P

REF : GARGAS2S1P



Description :

Boot range CLASSIC +. Upper : Pigmented split leather. Lining : Polyamide absorbing. Footbed : Fixed - Polyamide on EVA. Outsole : Injected - Dual-density PU.

Materials :

Upper : split leather

Sizes: 35, 36, 37, 38, 39, 40, 41, 42, 43, 44, 45, 46, 47, 48

Colours: Black

CE EN ISO 20345

GOULT2S1P

REF : GOULT2S1P



Description :

Shoes range CLASSIC +. Upper : Pigmented split leather. Lining : Polyamide absorbing. Footbed : Fixed - Polyamide on EVA. Outsole : Injected - Dual-density PU.

Materials :

Upper : pigmented split leather

Sizes: 35, 36, 37, 38, 39, 40, 41, 42, 43, 44, 45, 46, 47, 48

Colours: Black

CE EN ISO 20345

SAFTETOE

REF : SFTOEE HS1004



Description

PU injection, steel toe and steel plate, middle cut. Midsole and outsole: PU

Materials :

Embossed Split Leather, non-woven fabric

Sizes: 35, 36, 37, 38, 39, 40, 41, 42, 43, 44, 45, 46, 47, 48

Colours: Black

CE EN ISO 20345 ASTM F 2 413 EH

ROCKLANDER 4X4
REF : ROCKLANDER HS1010



Description:

PU injection, steel toe and steel plate, middle cut.
 Midsole and outsole: PU
 Shock absorber

Materials:

Leather upper

Sizes: 35, 36, 37, 38, 39, 40, 41, 42, 43, 44, 45, 46, 47, 48

Colours: Black

CE EN ISO 20345 ASTM F 2 413 EH

VIAGIS1PESD
REF : VIAGIS1PESD



Description :

LIGHT WALKERS range ESD shoes. Upper : Suede split leather and polyester mesh.
 Lining : Polyester. Insole : Removable preformed - Polyester on EVA. Outsole : Injected - Dual-density PU. Non metallic shoes.

Materials :

see description

Sizes: 36, 37, 38, 39, 40, 41, 42, 43, 44, 45, 46, 47, 48

Colours: Black / Red

CE EN ISO 20345 EN 61340-4-3 CLASS 1

VIAGIS1P
REF : VIAGIS1P



Description:

Shoes range LIGHT WALKERS. Upper : Suede split leather and polyester mesh. Lining : Polyester. Insole : Removable preformed - Polyester on EVA. Outsole : Injected - Dual-density PU. Non metallic shoes.

Materials:

see description

Sizes: 36, 37, 38, 39, 40, 41, 42, 43, 44, 45, 46, 47, 48

Colours: Beige/Orange, Black / Red, Grey / Green, Taupe/Red

CE EN ISO 20345 ASTM F 2 413 EH

PERTUISS1P
REF : PERTUIS



Description:

Safety shoes low upper type basket
 Upper : Low cut, split leather and nylon polyamid
 Lining : Absorbent polyamide
 Insock: Fixed, polyamide on foam
 Outsole : Cemented, phylon midsole, rubber outsole
 Toe cap and puncture-proof sole

Materials:

Upper : Split leather /polyamid.
 Insole : Polyurethane.
 Toe cap and puncture-proof sole : stainless steel.

Sizes: 36, 37, 38, 39, 40, 41, 42, 43, 44, 45, 46

Colours: Brown

CE EN ISO 20345

TW400S3SRC
REF : TW400S2



Description:

Boots range TREK WORK. Upper: Full grain leather. Lining: Polyamide Cambrelle. Insole: Removable preformed - Polyester on EVA. Midsole: Cemented - PU with Panoshock® shock absorber. Outsole: Rubber Nitrile. Non metallic footwear.

Materials:

See description.

Sizes: 39, 40, 41, 42, 43, 44, 45, 46, 47, 48

Colours: Black

CE EN ISO 20345

DSPIRIT S1P
REF : DSPIRITS1PNO



Description:

Shoes range SPORTSWEAR. Upper: Full grain leather and mesh. Lining: Polyester. Insole : Fixed - Polyester on EVA. Midsole : cemented - PU/rubber. Non metallic footwear.

Materials:

See description.

Sizes: 38, 39, 40, 41, 42, 43, 44, 45, 46, 47

Colours: Black/Brown

CE EN ISO 20345

MAUPEC3
REF : MAUPEC3



Description:

AGRO range clogs. Upper : Microfibre. Lining : Polyamide. Insole : Preformed removable - Polyamide on EVA. Outsole : Injected - Dual-density PU.

Materials:

See description

Sizes: 35, 36, 37, 38, 39, 40, 41, 42, 43, 44, 45, 46, 47

Colours: White

CE EN ISO 20345

LANTANA S1P
REF : LANTANAS1P



Description:

Boots range 4x4 INDUSTRY. Upper : Buffalo pigmented split leather. Lining : Polyamide absorbing. Insole : Removable - Polyamide on EVA. Midsole : Injected - Panorubber®. Outsole : Rubber Nitrile.

Materials:

See description

Sizes: 36, 37, 38, 39, 40, 41, 42, 43, 44, 45, 46, 47, 48

Colours: Black

CE EN ISO 20345

NAVARA S1P
REF : NAVARAS1P



Description:

Shoes range 4x4 INDUSTRY. Upper : Buffalo pigmented split leather. Lining : Polyamide absorbing. Insole : Removable - Polyamide on EVA. Midsole : Injected - Panorubber®. Outsole : Rubber Nitrile.

Materials:

See description

Sizes: 36, 37, 38, 39, 40, 41, 42, 43, 44, 45, 46, 47, 48

Colours: Black

CE EN ISO 20345

OHIO 2 S3
REF : OHIO2S3



Description:

Boots range OUTDOOR 2. Upper : nubuck leather. Lining : Polyester. Insole : Removable preformed - Polyester on EVA foam. Outsole : Cemented - PU / Rubber Nitrile. Non metallic boots.

Materials:

see description

Sizes: 36, 37, 38, 39, 40, 41, 42, 43, 44, 45, 46, 47, 48

Colours: Black

CE EN ISO 20345

DEVON
REF : DEVON3S3



Description:

WINTER BOOT range fur-lined boots. Upper : Pigmented split leather. Lining : Acrylic furlined. Insole : Removable acrylic furlined. Outsole : Injected - Dual-density PU.

Materials:

see description

Sizes: 39, 40, 41, 42, 43, 44, 45, 46, 47

Colours: Black

CE EN ISO 20345

HA001
REF : HA001



Description:

Full body harness with back attachment, made of 45 mm wide red polyester straps and two corrosion-resistant parachute buckles at the thigh level, to open and easily adjust the harness.

Materials:

Straps : red polyester.

CE EN 361

HAR12
REF : HAR12



Description:

2 fall arrester anchorage point harness (back - front). 2 adjustment loops.

Materials:

Straps : polyester.

Weight : 0,7 kg.

Sizes: S/M/L, XL/XXL

Colours: Orange

CE EN 361

HAR14
REF : HAR14



Description:

2 fall arrester anchorage point harness (back - front). 2 adjustment loops. 2 adjustable lateral plates. Positioning belt with broad thermoformed back. Sponge lining. 2 anchorage points for work positioning.

Materials:

Straps : polyester.

Belt : Sponge lining.

Weight : 1,1 kg.

Sizes: S/M/L, XL/XXL

Colours: Orange

CE EN361 EN358

HAR24
REF : HAR24



Description:

Harness with extensible "Riplight System II®" patented waves with positioning belt. 2 fall arrester anchorage points (back - front). 4 adjustable buckles. Positioning belt with thermoformed back closed with wide Velcro. 120° rotation. Large thermoformed back with sponge lining. 2 lateral anchorage points for work positioning.

Materials:

Straps : polyester.

Belt : Sponge lining.

Weight : 1,8 kg.

Sizes: S/M/L

Colours: Black / Orange-coloured



HA054
REF : HA054



Description:

Full body harness with back and chest attachments, made of 45-mm wide red polyester straps, and two corrosion-resistant parachute buckles at the thigh level for opening and easy adjustment of the harness.

Materials:

Straps: polyester.

Sizes: M, L, XL

Colours: Red



HA060
RE : HA060



Description:

Expert range fall arrest harness made of 45-mm straps and consists of:

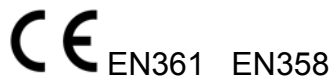
- 2 attachments points (rear - chest).
- 1 work positioning belt with 2 lateral attachment and 1 textile thermo-formed back support.
- 1 semi-rigid saddle in textile.
- elastic straps.
- quick buckles at thigh level and continuous adjustment buckles at shoulder's level.

Materials:

Straps: polyester.

Sizes: Adjustable

Colours: Navy Blue / Black



HA098
REF : HA098



Description:

This full body harness light and easy to put on and to adjust, is intended for incorporation in a fall arrest system. It is made of 45-mm straps, it consists of dorsal and front attachments, and quick buckles at thigh level.

Materials:

Straps: polyester.

Sizes: Adjustable

Colours: Red / Grey

CE EN361

HAR35 EOLIEN
REF : HAR35



Description:

Two colour harness with positioning belt. 3 fall arrester attachment points (back- front right side - front left side). 4 adjustable buckles in light alloy. 2 automatic buckles. Positioning belt with thermoformed back closed with wide Velcro for more comfort. 120° rotation. 2 lateral anchorage points. 1 adjustment loop. Sponge back lining.

Materials:

Straps : polyester.

Belt : Sponge lining.

Weight : 2 kg.

Sizes: S/M/L, XL/XXL

Colours: Orange

CE EN358 EN361

HA644
REF : HA644



Description:

Full body harness with 2 attachments points HA644, indissociable, including a full body harness HA044 and a vest.

* Full body harness with bicoloured polyester straps (45 mm): front and back attachment, ventral belt, karabiner, quick buckles at thigh level.

* One size polyester vest closed by zip including 2 low pockets closed by zip. Fabric parts made of Cordura® or of knitted fabric 3D. Spine protection. Waist level adjustments on each side by elastic waistband with stoppers. Net fabric lining.

Materials:

Straps : polyester

Vest : polyester

Sizes: L, XL

Colours: Black / Orange-coloured

CE EN361

EX021
REF : EX21



Description:

Adjustable work positioning lanyard via reducer. Adjustable length: 1.10 to 2 m. Stranded rope Ø 12 mm. Protective sheath on the splices.

Materials:

Polyamide.

Weight: 0,3 kg.

Colours: White / Grey

CE EN358

LV201
REF : LV201



Description:

Temporary horizontal lifeline with certified strap for 2 people. Adjustment of the length and the tension with a ratchet tensioner. Equipped with 2 carabiners AM002. Bag for storage and transport.

Materials:

Buckles: Leather.

Strap: Polyester.

AM002: Galvanized steel.

Weight: 3,3 kg.

Colours: Yellow

CE EN355

AN209CC
REF : AN209CC



Description:

Fall arrester with energy absorber in lanyard webbing. Thimble loops. Length: 2 m. 2 Screw lock carabiners in galvanized steel, opening 17 mm (AM002).

Materials:

Lanyard: Polyester.

Carabiner: galvanized steel.

Weight: 0,7 kg

CE EN355

AN219CDD
REF : AN219CDD



Description:

Fall arrester with energy absorber in double lanyard webbing (Y). Thimble loops. Length: 2 m. 3 Screw lock carabiners in galvanized steel, opening 17 mm (AM002).

Materials:

Lanyard: Polyester.

Carabiner: galvanized steel.

Weight: 1,3 kg

CE EN355

AN208RCD
REF : AN208RCD



Description:

Fall arrester with energy absorber in braided rope Ø 12 mm, simple and adjustable by means of a gear ring on the rope. Length: 1.50 to 2 m. 1 Screw lock carabiner in galvanized steel, opening 17 mm (AM002). 1 Automatic hook lock in galvanized steel, large opening 55 mm (AM022).

Materials:

Rope: Polyamide.

Absorber: Polyester.

Carabiner and hook: galvanized steel.

Weight : 1,3 kg

CE EN355

AN213CDD
REF : AN213CDD



Description:

Fall arrester with energy absorber in double lanyard strap (Y). Thimble loops. Length: 2 m. 1 Screw lock carabiner in galvanized steel, opening 17 mm (AM002). 2 Automatic hooks lock in galvanized steel, large opening 55 mm (AM022).

Materials:

Lanyard: Polyester.

Carabiner and hook: galvanized steel.

Weight: 1,8 kg

Colours: Orange

CE EN355

AN230CD
REF : AN230CD



Description:

Fall arrester with energy absorber in woven webbing with integrated crumple on the lanyard. Retracted length: 1.40 m. Stretched length: 2 m. 1 Screw lock carabiner in galvanized steel, opening 17 mm (AM002). 1 Automatic hook lock in galvanized steel, large opening 55 mm (AM022).

Materials:

Polyester.

Carabiner and hook: galvanized steel.

Weight: 1 kg

Colours: Black

CE EN355

SLIDING FALL ARRESTER ON Ø 12 MM ROPE ANCHORAGE LINE - 10 M
REF: AN063



Description :

Sliding non opening fall arrester set with fall indicator on stranded rope anchorage line Ø 12 mm. Wear indicator. 1 loop spliced on high end. Length: 10 m.

Materials:

Fall arrester: Stainless steel.

Rope: Polyamide.

Carabiner : Zinc-coated steel.

Weight : 1,3 kg.

CE EN 353-2

SCREW SAFETY KARABINER
REF:AM002



Description:

Screw safety karabiner provided with a double locking mechanism. 17-mm opening. Screw manual locking type. Anticorrosion coating and antilocking of the locking ring.

Materials:

Zinc-coated steel.

Weight: 0,17 kg

Colours: Steel

CE EN 362

AUTOMATIC LOCK HOOK, 55 MM OPENING - PACK OF 2
REF: AM022



Description :

Automatic lock hook in zinc-coated steel. Large opening 55 mm. Eye hook. R> 20 kN.

Materials:

Zinc-coated steel.

Weight : 0,50 kg.

Colours: Steel

CE EN 362

STRAP SELF-RETRACTABLE FALL ARRESTER + 1 AM002 - 2.5 M
REF: AN102



Description :

Self retractable fall arrester with 46 mm strap with energy dissipater. Protection case. 1 carabiner AM002.

Materials:

Strap : polyester.

Casing: plastic.

Carabiner : steel.

Weight: 1,1 kg.

CE EN 360

PROTECTOR ELEVATOR 20 M
REF:TR007



Description :

Self retractable fall arrester in steel cable with removable rescue winch. Steel case. Inertia locking system. Energy absorber. Length: 20 m. 1 connector AM020.

Materials:

Cable: steel.

Casing: steel.

Winch: steel.

Connector: light alloy.

Weight: 14,9 kg.

CE EN 360 EN 1496 CLASS B

TELESCOPIC TRIPOD WITH ANCHORAGE RING + 2 PLATES - 1,45 TO 2,15 M

REF: TR022



Description :

Telescopic tripod in galvanized steel. Adjustable height from 1.45 m to 2.15 m. Maximum wheelbase of 1.50 m on the ground. 1 central anchorage ring for a fall arrest. Equipped with two adjustable plates for a self retractable fall arrester.

Materials:

Galvanized steel.

Weight : 26 kg.

Colours: Steel

CE EN 795 CLASS B

ALUMINIUM VENTRAL BLOCKER

REF: TC001



Description :

Ventral opening blocker type in aluminium alloy. Works on braided rope Ø 8 to 13 mm.

Materials:

Aluminium alloy.

Weight: 0,16 kg.

Sizes: Single

Colours: Red

CE EN 567

ALUMINIUM ASCENSION HANDLE - RIGHT HAND

REF: TC002



Description :

Right hand ascension handle in aluminium alloy. Works on braided rope Ø 8 to 13 mm.

Materials:

Aluminium alloy.

Weight: 0,24 kg.

Colours: Blue

CE EN 567

FIGURE OF EIGHT IN ALUMINIUM

REF:TC004

**Description:**

Figure of eight in aluminium alloy. Works on braided rope Ø 9 to 12 mm.

Materials:

Aluminium alloy.

Weight: 0,13 kg.

CE EN 12278

DOUBLE PULLEY WITH OSCILLATING FLANGES IN ALUMINIUM

REF:TC015

**Description:**

Double pulley with oscillating flanges in aluminium alloy for braided rope less than Ø 16 mm.

Materials:

Aluminium alloy

Weight: 0,43 kg.

CE EN 12278

HIGH VISIBILITY JACKET AND PANT
REF : 80302 (G472 ORANGE) / 80301 (G472 YELLOW)



Description:

Treatment teflon (water repellent, oil and stain release), 3M Scotchlite Reflective Materials, application: outdoor workers.

Materials:

Woven polyester / cotton twill fabric

Colours: Two-tones, orange and dark grey or yellow and dark grey



ISO 20471 Class 2 EN471

HIGH VISIBILITY POLO - SHIRT
REF : 80201 (E773 YELLOW) / 80202 (E773 ORANGE)



Description:

Polyester with wicking treatment, treatment moisture wicking, application outdoor workers or manager, 3M Scotchlite Reflective Materials in AMS patented Pattern

Materials:

Polyester with wicking treatment

Colours: Yellow or Orange



ISO 20471 Class 2 EN471

HIGH VISIBILITY SURVEYOR VEST

REF : 80107 (A516)



Description:

3M Scotchlite Reflective Materials, Application engineering staff in transportation, municipal administration, sanitation, construction etc.

Materials:

Polyester Knitted Fabric

Colours: Two- Tone (yellow and dark blue)



GB20653 EN471

HIGH VISIBILITY 3-IN-1 THERMAL PARKA

REF : 80504 (B008 ORANGE) / 80503 (B008 YELLOW)



Description:

3M Schotchlite Reflective Materials, 3M Schotchlite Reflective Materials, 3M Thinsulate Thermal Insulation Materials

Materials:

Polyester woven oxford with breathable PU coating,

Colours: Two-Tone (orange and dark blue / yellow and dark blue)



ISO 20471 CLASS 3 EN471

HIGH VISIBILITY RAINCOAT
REF : 80602 (D012 / C001 ORANGE)



Description:
3M Schotchlite Relective Materials

Materials:
Polyester woven oxford with breathable PU Coating

Colours: Orange

CE ISO 20471 CLASS 3 EN471

WARNING RAINCOAT
REF : 80603 (D040 / CO11)



Description:
3M Scohtchlite Reflective Materials, Outdoor workers

Materials:
Polyester Woven Oxford with breathable PU Coating

Colours: Dark Blue

CE ISO 20471 CLASS 3 EN471

HI – VIS HOODIE
REF : HVK05



Description:
High Visibility Hoodie

Materials:

Sizes: S- 3XL

Colours: Yellow, Orange

CE GB20653 EN471

HI – VIS SWEAT SHIRT
REF : HVJ510



Description:
High Visibility Sweet Shirt

Materials:

Sizes: S- 3XL

Colours: Yellow, Orange

CE GB20653 EN471

HI-VIS MOTORWAY JACKET
REF : HVP300



Description:
Classic Motorway jacket

Materials:

Sizes: S-6XL

Colours: Yellow, Orange

CE GB20653 EN471

EN400RE
REF : EN400RE



Description:
Rain jacket and trousers. Sewn and taped sealed seams. Hooded jacket with hood cord. Zip fastener. Wind-resistant flap inside. Raglan sleeves with press-studded cuffs. Air vents on armholes. Dorsal flap with ventilation. 2 flapped pockets. Waist cord trousers. Press-studded lower part of legs. 2 open pockets. 3M Reflective band.

Materials:
PVC-coated 100% polyester support internal side 190gr/m².

Sizes: M, L, XL, XXL

Colours: Green, Navy Blue, Royal Blue, Yellow

CE EN343 EN471

OPTIMUM
REF : OPTIMUM



Description :

PARKA 4 IN 1: REMOVABLE BODYWARMER Parka : Waterproof seams. Fastening with zip under storm flap. Fixed hood. High visibility : Class 3 - Silver colour - Shoulderbelt and parallel assembly. 4 pockets. Removable bodywarmer : Waterproof seams. Removable sleeves. 4 pockets. High visibility : Class 2 - Silver colour - Shoulderbelt assembly.

Materials: 100% Polyester Oxford with PVC-coating - 250 g/m² Fixed lining Taffetas 190T 100% Polyester - 55 g/m² Removable bodywarmer 100% Polyester Oxford with PVC-coating - 250 g/m² with removable sleeves in polar 100% polyester - 220 g/m² Lining Taffetas 100% Polyester quilted - 55 g/m² Stuffing : 100% polyester - 100 g/m² NESTAR REF 2471 retroreflecting stripes 80% polyester, 20% cotton PU coated and glass beads (25 washings at 30°C).

Sizes: S - M - L - XL - XXL - XXXL

Colours: Fluorescent Orange-coloured / Navy Blue - Fluorescent Yellow / Navy Blue

CE EN471 EN343 EN471

PHVES JACKET – FIRE RETARDANT OR NO FIRE RETARDANT
REF : PHVES



Description:

PANOSTYLE high-visibility working jacket. Elasticated cuffs. 2 pockets. High visibility : Class 2 - Silver colour - Shoulder-belt and parallel assembly.

Materials:

54% Cotton / 46 % Polyester - 260 g/m².
Retroreflecting stripes 100% polyester.

Sizes: S, M, L, XL, XXL, XXXL

Colours: Fluorescent Orange-coloured / Navy Blue, Fluorescent Yellow / Navy Blue

CE EN14116 EN471

PHPAN PANT – FIRE RETARDANT OR NO FIRE RETARDANT
REF : PHPAN



Description:

PANOSTYLE high-visibility working trousers. Elasticated waist on both sides. High visibility : Class 2 - Silver colour. 5 pockets including 1 ruler pocket.

Materials:

54% Cotton / 46 % Polyester - 260 g/m².
Retroreflecting stripes 100% polyester.

Sizes: S, M, L, XL, XXL, XXXL

Colours: Fluorescent Orange-coloured / Navy Blue, Fluorescent Yellow / Navy Blue

CE EN14116 EN471

EASYVIEW WINTER JACKET

REF : EASYVIEW



Description:

Rain warm parka. Waterproof seams. Fixed hood. Fastening with zip under Velcro storm flap. High visibility : Class 3 - Silver colour - Shoulder-belt and parallel assembly. 4 pockets.

Materials:

Outside:

- Fluorescent yellow (or orange) material: 100% internal polyester coated polyurethane (200 g/m²)

- Navy blue material: 100% internal polyester coated polyurethane (200 g/m²)

Lining : 100% polyester (45 g/m²)

Stuffing : 100% polyester (160 g/m² for body, 120 g/m² for sleeves)

NESTAR REF 2471 retroreflecting stripes 80%polyester, 20% cotton PU coated and glass beads (25 washings at 30°C).

Sizes: S, M, L, XL, XXL, XXXL

Colours: Fluorescent Orange-coloured / Navy Blue, Fluorescent Yellow / Navy Blue



EN343 EN471 EN14058

COVERALL FIRE RETARDANT 3M REFLECTIVE BAND

REF : COVERALL



Description :

12 oz. 100% cotton 350 gsm fr twill, 2" FR Reflective yellow/silver/yellow striping

Two way breakaway zipper with storm flap

Fold-down collar

Two front upper pockets

Two back pockets

Two front slash pockets with side access

Tool pocket on rear right leg

True bi-swing action back for flexibility and easy movement

Sizes: S, M, L, XL, XXL, XXXL

Colours: Blue, Red, Orange, and Yellow



EN531 EN533 EN14116 EN471

WINTER JACKET FIRE RETARDANT 3M

REF : WJFR



Description:

Rain warm parka. Waterproof seams. Fixed hood. Fastening with zip under Velcro storm flap. High visibility : Class 3 - Silver colour - Shoulder-belt and parallel assembly. 4 pockets.

Materials:

Outside: Fluorescent yellow (or orange) material: 100% cotton, 350 gsm FR

Sizes: S, M, L, XL, XXL, XXXL

Colours: Fluorescent Orange-coloured / black, Fluorescent Yellow / black



EN14058 EN343 EN471 EN14116

BORCO FIRE RETARDANT REF : BORCO



Description:

BORNEO overalls. Straight collar closed with hidden press studs. Fastening with hidden press studs. Elasticated waist at the back. Half elasticated wrists. 6 pockets including 1 ruler pocket. 2 hand slits.

Available in :

- navy blue color (ref. BORCOBM) - Kneepad pocket inside.
- orange with retro-reflective bands (ref. BORCOOV)

Materials:

Ripstop 55% Modacrylic Staciflam®, 42% cotton, 3% antistatic fibre 295 g/m².

Sizes: S, M, L, XL, XXL, XXXL, XXXXL

Colours: Navy Blue, Orange



EN531 EN533 EN14116 EN471

SUMMER OVERALL FIRE RETARDANT & NO-FIRE RETARDANT REF : SOFR/SONFR



Description:

Shirt and pant for summer season.
Reflective band

Materials:

Cotton (150-180 g/m²)

Sizes: S, M, L, XL, XXL, XXXL, XXXXL

Colours: Orange/Black, Yellow/Black



EN14116 EN1149-5 EN471

GILP4 REF : GILP4



Description:

High visibility vest. Fastening with Velcro band. High visibility: Class 2

Materials:

Polyester fabric
Reflective sewn band

Sizes: L, XL

Colours: Orange, Yellow



EN471

FIDJI
REF : FIDJI



Description:

Vest. PVC-coated polyester pongee. Polar lining. Fastening : zip. Pockets : 4. Kidneys protection. Ease zip on sides.

Materials:

Outshell: 100% polyester Pongee PVC-coated - 160 g/m²

Lining: 100% polyester polar - 270 g/m²

Padding: 100% polyester - 200 g/m²

Sizes: S, M, L, XL, XXL

Colours: Black, Grey / Black, Orange-coloured / Grey



DUNCAN
REF : DUNCAN



Description:

Parka. Waterproof seams. Fastening with zip under Velcro storm flap. Removable hood. Underarm ventilation with eyelets. Adjustable bottom of garment with elastic drawstring. 5 pockets.

Materials:

PVC-coated Ripstop polyester fabric.

Top lining : Wadded polyester polar fleece 280 g/m². Bottom lining : Wadded polyester Taffeta.

Wadding: 100% polyester 160 g/m².

Sizes: S, M, L, XL, XXL, XXXL

Colours: Grey, Navy Blue



EN14058 EN343

LIDINGO
REF : LIDINGO



Description:

Rain suit: jacket and trousers. Waterproof seams.

Jacket: Fixed hood. Fastening with zip under Velcro storm flap. Adjustable bottom of garment with elastic drawstring. 5 pockets.

Trousers: Elasticated waist. Adjustable bottom by press studs. 2 pockets.

Materials:

Shell: Polyester with PVC Coating

Lining: 100 % Polyester

Sizes: S, M, L, XL, XXL, XXXL

Colours: Navy Blue



EN343

MA305
REF : MA305



Description:

Raincoat with sewn and sealed seams. Fixed hood with cord, press-studded flapped fastening, wind-resistant flap inside, raglan sleeves with wind-resistant cuffs inside, 2 flapped patched pockets, length: 1.20m.

Materials:

PVC/Polyester/PVC

Sizes: M, L, XL, XXL

Colours: Green, Yellow



MA400
REF : MA400



Description: Rain coat. Sealed seams. Fixed hood. Fastening with double press-studs flap. Raglan sleeves. Elasticated inside cuffs. 2 pockets.

Materials: PVC-coated 100% polyester support internal side 190 gr/m².

Size: M - L - XL - XXL

Colours: Green - Yellow



EN400
REF : EN400



Description:

Rain jacket and trousers. Sewn and taped sealed seams. Hooded jacket with hood cord. Zip fastener. Wind-resistant flap inside. Raglan sleeves with press-studded cuffs. Air vents on armholes. Dorsal flap with ventilation. 2 flapped pockets. Waist cord trousers. Press-studded lower part of legs. 2 open pockets.

Materials:

PVC-coated 100% polyester support internal side 190gr/m².

Sizes: M, L, XL, XXL

Colours: Green, Navy Blue, Royal Blue, Yellow



HAMPTON
REF : HAMPTON



Description:

Parka.
Quilted removable hood.
Fastened with a zip under the storm flap with buttons.
Adjustable waist and bottom with elastic drawstring.
8 pockets.

Materials:

Quilted twill 65% polyester 35% cotton 245g/m².
Quilted polyester Taffeta lining.

Sizes: XS, S, M, L, XL, XXL, XXXL

Colours: Grey / Yellow



EN14058 EN343

NORDLAND
REF : NORDLAND



Description:

Parka.
Waterproof seams.
Removable hood.
Collar with polar fleece lining.
Fastening with zip under press stud storm flap.
Adjustable waist and bottom with elastic drawstring.
7 pockets.

Materials:

Polyurethane-coated Oxford polyester fabric.
Quilted polyester Taffeta lining.

Sizes: S, M, L, XL, XXL, XXXL

Colours: Grey



EN14058 EN342 EN343

ICEBERG
REF : ICEBERG



Description:

Warm trousers.
Waterproof seams.
Adjustable waist with elastic drawstring.
Adjustable braces.
Preformed and reinforced knees.
5 pockets.

Materials:

Polyurethane-coated Oxford polyester fabric.
Quilted polyester Taffeta lining.

Sizes: S, M, L, XL, XXL, XXXL

Colours: Grey



EN14058 EN342 EN343

LADUT
REF : LADUT



Description :

Parka navy blue colour in Polyester/Cotton, felled seams, inside lining with Thermolite™ padding, inside vertical quilting, not visible on outside of the garment, removable hood with zip lined with polar fleece and Thermolite™ padding, inside stretch ribbing in warm and goos fabric, drawstring between 2 seams with stopper and tip, inside collar lined with polar fleece, front zip double cursor with tab closing with velcro all the length of the jacket, 1 chest pocket on left side with flap closed by velcro, "flake" embroidery white colour on the flap, 1 layered pen pocket, 1 chest pocket on right side vertical opening closed by velcro, 1 layered phone pocket, 2 bottom pockets vertical opening closed by flap with velcro, pockets are lined with Thermolite™ padding, back waisted by elastic, sleeves bottom with inside stretch ribbing cuff and tab closing with velcro.

Materials: Shell : 85% Polyester / 15% Cotton Lining : 100% Nylon Padding : 100% Thermolite™

Sizes: L - M - XL - XXL

Colours: Navy Blue

CE EN342

AUDUT
REF : AUDUT



Description :

Dungarees navy blue colour in Polyester/Cotton, felled seams, inside lining with Thermolite™ padding, inside vertical quilting spacing between 12 and 15 cm, not visible on outside of the garment, front zip double cursor with tab closing with velcro all the length of the jacket, 2 horizontal front pockets above the waist closed by zip with "Panoply" zipper pulls, "flake" embroidery white colour on the left zipper pocket, 2 bottom pockets vertical opening closed by flap with velcro, pockets are lined with Thermolite™ padding, back waisted by elastic, sleeves bottom with inside stretch ribbing cuff and tab closing with velcro, bottom legs with inside zip and flap with velcro on all the length and adjustable with velcro.

Materials: Shell : 85% Polyester / 15% Cotton Lining : 100% Nylon Padding : 100% Thermolite™

Sizes: L/GT - M/TM - XL/XG - XXL/XX

Colours: Navy Blue

CE EN342

LARVIK
REF : LARVIK



Description:

Parka. Waterproof seams. Removable wadded hood. Fastening with zip under velcro storm flap. Adjustable bottom of garment with elastic drawstring. 10 pockets.

Materials:

Shell : Oxford polyester with PU coating.
Up lining : wadded polyester polar fleece.
Low lining : quilted Taffeta polyester.

Sizes: S, M, L, XL, XXL, XXXL

Colours: Red

CE EN14058 EN342 EN343

M6COM
REF : M6COM



Description:

PANOSTYLE® working overall 65% polyester / 35% cotton. Zip fastening under bias. Elasticated waist. Elasticated wrist. 7 pockets.

Materials:

65% polyester / 35% cotton 235 g/m²

Sizes: XS, S, M, L, XL, XXL, XXXL

Colours: Brown/Green, Grey / Green, Navy Blue / Orange-coloured



M6GIL
REF : M6GIL



Description:

PANOSTYLE® multipockets working vest 65% polyester / 35% cotton. Bias finishing. 6 pockets.

Materials:

65% polyester / 35% cotton 235 g/m²

Sizes: XS, S, M, L, XL, XXL, XXXL

Colours: Brown/Green, Grey / Green, Navy Blue / Orange-coloured



M2CDZ
REF : M2CDZ



Description:

MACH2 overall 65% polyester / 35% cotton. Officer collar. Front fastener by double zip. Waist tightened by elastic with stop drawcord. Bottom of the sleeves adjustable by press-stud. Elasticated waist. 11 pockets. Badge holder.

Materials:

65% polyester 35% cotton 245 grs/m².

Sizes: S, M, L, XL, XXL, XXXL

Colours: Grey / Orange-coloured, Navy Blue / Royal Blue



ALASKA

REF : ALASKA



Description:

PVC-coated polyester parka. Inside quilted lining with 3M Thinsulate™ padding removable by zip. Fixed hood which can be folded in the collar fastened with velcro strip. Front zip fastener under velcroed-strip double flap. 1 pocket closed by zip under front flap. 2 flapped and zipped chest pockets. 2 flapped and zipped low pockets. 1 zipped internal pocket. 1 patched pocket closed by velcro on the removable lining. Seams reinforced with thermobonded stripes. Waist and bottom tightened by elastic drawcord with stop drawcord. Elasticated cuffs with velcroed tightening strap. Polyester polar wool lined collar.

Materials:

Outside : polyester coated PVC.
Removable lining : 3M Thinsulat™.

Sizes: S, M, L, XL, XXL, XXXL

Colours: Grey / Black, Red / Navy Blue, Royal Blue / Navy Blue

CE EN14058 EN343

MC CHE SHIRT

REF : MC CHE



Description:

MACH2 CORPORATE working overshirt in polyester / cotton. Button flap fold-up long sleeves. Fastening : Zip under velcro flap. Opening for audio wires. 3 pockets.

Materials:

65% polyester 35% coton - 200 g/m²

Sizes: S, M, L, XL, XXL, XXXL

Colours: Beige / Grey, Light Grey / Dark Grey, Navy Blue / Black

CE

M2PAW

REF : M2PAW



Description:

MACH2 WINTER working trousers 65% polyester / 35% cotton. Flannel lining. Elasticated waist on both sides. Concealed zip fastening. Kneepads pockets. 8 pockets.

Materials:

65% polyester / 35% cotton 245 g/m²
Lining : 100% cotton flannel 145 g/m²

Sizes: S, M, L, XL, XXL, XXXL

Colours: Black / Grey, Grey / Orange-coloured

CE

WINTER FLEECE JACKET REF : WINTER FLEECE JACKET



Description:

This fleece jacket with cropped version, can be used as a lightweight, warm clothing worn alone or weather-defensive jacket to match. NANUK260 fleece is made with better warm-keeping function. In addition, it also equipped with short pull system, versatile, suitable for the year.

Materials: polyester

Sizes: S-2XL

Colours: Blue



SOUS VETEMENT FIRE RETARDANT REF : SSVFR



Description:

Underwear set. Tee-shirt with long sleeves. Long underpants.

Materials:

STRUCTURE: 50% Meta-aramid knittwear / 48% Viscose FR / 2% carbon (220 g/m²)

Sizes: S, M, L, XL, XXL, XXXL, XXXXL

Colours: Navy Blue



EN14116 EN1149-5

CAGOULE 1 FIRE RETARDANT REF : CAFR1



Description:

Hood with flap covering shoulders. Model with opening for the eyes and another for the head. These openings are stitched to the main piece by a 15 mm seam. It is finished with a safety seam starting on the upper part of the opening for the eyes and ending behind the neck. The thread used is of the same material as the fabric.

Materials:

STRUCTURE: 50% Meta-aramid / 50% Viscose FR interlock knit, 220 g/m²

Sizes: Single

Colours: Navy Blue



EN14116 EN1149-5

COWHIDE WELDER APRON REF : TASOUB



Description:

COWHIDE WELDER'S APRON 90X60CM

Welder's apron. Welder apron with bib. Adjustment buckle on the neck. Sewn split leather strap with plastic bucklet.

Materials:

Cowhide apron, Kevlar

Sizes:

Single

Colours:

Grey



EN116111 TYPE A1 CLASSE 2

ANTI-ACID OVERALL REF : DT221



Description:

Overall with elasticated hood. Non-woven Deltatek® 6000. Fastening with zip under flap. Elasticated round head, waist and ankles. Knitted wrist. Individual airtight pack.

Materials:

Non-woven Deltatek 6000® : 100% polypropylene SMMS (Spunbond Melt blown x2 Spunbond)

Sizes:

L, XL

Colours:

White



EN ISO 13982-1 EN13034 EN1073-2 EN1149-5

COWHIDE WELDER'S JACKET REF : VESTEW



Description:

Cowhide welder's jacket. Made-up long sleeves. Velcroed fastening under flap. Straight cuffs. Mandarin collar.

Materials:

Cowhide

Sizes:

M, L, XL, XXL,

Colours:

White, Grey



EN116111 TYPE A1 CLASSE 2

COWHIDE WELDER'S CUFF PAIR REF:MANCHAB



Description:

Cowhide cuff pair with elastic lateral fastening.

Materials:

Cowhide

Colours: White,Grey

CE EN116111 TYPE A1 CLASSE 2

SUMMER MEDICAL VEST REF:SUMEDICALVEST



Description:

Summer Medical vest

Materials: Cotton

Colours: White

GAS-TIGHT & ANTI-ACID SCAPHANDRE REF:ALAIN



Description:

Gas-tight & anti-acid suit for internal breathing apparatus, made of flame retardant
For self-contained breathing apparatus carried inside the suit

Materials:

Hypalon, 550g/m2

Colours: Orange/Red

CE EN 943-1 TYPE A1

GAS-TIGHT & ANTI-ACID SCAPHANDRE
REF: ALEX



Description:

Gas-tight & anti-acid suit for internal breathing apparatus, made of flame retardant
For self-contained breathing apparatus carried inside the suit

Materials:

Hypalon, 550g/m2

Colours: Orange/Red

CE EN 943-1 TYPE A1

LIQUID PROOF ANTI-ACID COMBI
REF: COMBI 71



Description:

Anti-acid protective overall made of flame retardant.
Velcro flap covered standard zip closure, Elasticized cuff and leg.

Materials:

Hypalon, 420 g/m2

Colours: Orange/Red

CE EN 465 TYPE 4 EN 466 TYPE 3

LIQUID PROOF ANTI-ACID FACE
REF: CAGO 81



Description:

Anti-acid protective hood made of flame retardant.
Neck ring. Inside headband. Interchangeable anti-fog polycarbonate visor.

Materials:

Hypalon, 550 g/m2

Colours: Orange/Red

CE EN 465 TYPE 4 EN 466 TYPE 3

ANTI ACID OVERALL

REF: CO600



Description:

Anti-acid overall. Assembled hood. Cuff and ankle non-elasticated. Zip fastener under press-studded flap. Sealed seams.

Colours: Green



EN 14605 :2005+A1 :2009

HEAT-RESISTANT CLOTHES

REF: VESTE084/PANT084



Description:

Nomex Jacket and Trousers, single-sided coated with aluminized Hypalon. Roomy hood with facial flap. Zip-fastener under protective flap.

Materials:

Hypalon, 480 g/m2

Colours: Alu



EN 531 EN 466

HEAT-RESISTANT CLOTHES HOOD

REF:CAGOULE 19A



Description:

Heat and projection resistant hood made of aluminized Preox papa-aramid. Assembled on adjustable headband. Side ventilation slits.

Materials:

Preox papa-aramid, 520 g/m2

Colours: Alu



EN 531

HEAT-RESISTANT CLOTHES GUETRE

REF: GUETRE19A

**Description:**

Heat and projection resistant gaiters made of aluminized Preox papa-aramid. Open behind, with flap, one size only.

Materials:

Preox papa-aramid

Colours: Alu

CE EN 531

HEAT-RESISTANT TERK

REF: TERK400A

**Description:**

Heat and projection resistant gloves made of aluminized Preox papa-aramid. American cut, wing thumb, leather hide palm.

Materials:

Preox papa-aramid

Sizes: 10, Length: 40 cm

Colours: Alu

CE EN 531

WATER RESISTANT BAG

REF:WPBAG



Description:

Water Resistant ACE Bag have reinforced bottom and are made of water- and cold-resistant fabric that protects against rain, snow, marine splash, and more. Bags also feature heavy-duty, zippers, flap for moisture protection.

Colours: Black



TRAVEL BAG PVC

REF : TBPVC



Description :

Travel Bag size 30', PVC, Water protection

Colours: Black



TC008

REF : TC008



Description :

PVC, WATERPROOF BAG

Sizes : S/M/L

Colours: Blue



Z1BAG
REF : Z1BAG



Description :
Techline Clothes Case

Colours: Black



BACKPACK
REF: BACKPACK



Description:
computer bags, mesh pockets
Main cabin: straps, mesh pockets
Front functional pockets, key chain
Former bags up and down, left and right side bag

Materials:
plash-proof high density 1680D double strand polyester
Lining: embossed polyester

Weight: 1.27KG

Bag size: 47.5*35*27cm, Computer bag size: (34-42) *27*4.5cm

Colours: Black



UVEX CLEANING LENS REF :UVEXCLEAR16



Description:

Protect your safety eyewear with this especially made solution to refill your Uvex® Clear® cleaning stations.

- 16 oz. bottle with pump.



UVEX LENS CLEANING STATION REF: UVEX3A4500



Description:

500 ml Bottle cleaning solution - suitable for all lenses (3A4500)
Plastic pump for cleaning solution

Size:

300 x 480 x 165mm



UVEX LENS CLEANING DISPENSER REF: UVEXDIPSENER



Description:

Honeywell

Uvex Lens Cleaning Solution for safety glasses

Contains: Dispenser , silicone-free cleaning tissues 700 sheets per box,
and one bottle 9972-000 (0.5l) of lens cleaning solution ,Pump



ZEISS PRE-MOISTENED LENS CLEANING WIPES

REF :ZEISSPMWIPES



Description:

Zeiss Lens Cleaning Wipes safely and quickly clean most optics, including eyeglass lenses, laptop screens, camera lenses, sunglasses, cell phones and GPS screens. The pre-moistened wipes easily remove smudges, and the high tech ammonia free formula is safe for anti-reflective coating, leaving a streak free clean.
200 WIPES/BOX



DELICATE TASK WIPES

REF : KIMTECHWIPES



Description:

KIMTECH SCIENCE* KIMWIPES* Delicate Task Wiper is a light duty wiper that can handle a variety of delicate tasks. Easily wipes up liquid and dust. Anti-static dispensing reduces lint and electrostatic discharge, controls usage and portability reduces waste. Nonabrasive, low-linting and low-extractable wipers for delicate task wiping. Contains LINTGUARD®, an anti-static polyshield that reduces lint and electrostatic discharge. One-ply. Convenient POP-UP® box. White. 280 WIPES/BOX

Sizes :11.2 x 21.3cm



KIMTECH SCIENCE* KIMWIPES* LOW DUST WIPING PAPER

REF : KIMTECH SCIENCE*



Description:

ultra low dust, wipe the time savings;
Fine paper, not scraping perianth dry surface;
Anti-static film, prevents static electricity and dust;
Good wet and dry strength,would not be broken;
100% wood pulp with a special process, the texture is pure, efficient water uptake;
Choose a variety of specifications, to meet different needs.

Color: white

Layers: single layer

Sizes: 110mm * 210mm
Package quantity: 280pcs

Quantity per box: 60 boxes

Total quantity per box: 16800pcs

Applications: science, analysis of precision instruments, wipe clean;
Cooperate with the product surface cleaning solvents; precision components wipe;
Printing equipment clean;



LIFE JACKET F REF:LIFEJA



Description:

Be suitable for all the aquatic activities: Sea surveillance, fishing, seas cruise, shipping, water rescue, water police, flood defense. Adjustable quick release front buckles
Limited Floating: 120 Kg

Materials: Nylon, EPE foam

CE EN 393 EN 395

LIFE JACKET INFLATABLE REF:LIFEJA2



Description:

Inflatable life jacket. Designed and produced according to the requirements of MSC. 81(70).

When falling into water, it can be inflated by the auto inflation device with five seconds or by manually pulling the toggle so as to ensure safety of the drowning people. Light weight, comfort, easy use and suitable for offshore operation and personal protective device.

Materials: Nylon, auto inflation device

CE EN 396 A1

INFLATABLE LIFEJACKET REF: CQYB/III-275N



Description:

Inflatable lifejacket CQYB Series is developed and produced to the latest requirements of SOLAS, LSA, and MSC.81 (70) and partial product approved by CE, **CCS** and EC.; Air chamber:Double, Inflation type:automatic+manual, Buoyancy:≥275N, CO2 weight:55g; Weight:≤1.5kg, Angle in water face plane angle≥40°, trunk angle≥30°, Freeboard:≥120mm; Inflation time:≤5s, Floating duration:≥24h, Buoyancy loss after 24h≤5%
Ambient temperature:-30-65°C

Materials: Inflatable Chamber Material :0.15mmTPU Film 210D Stick a Polyether + TPU(Double), Lifejacket Cover Fabric :300D Elater 23X20 Polyester Fabric

Weight: 1.5kg

Sizes: 62x30

Colours: red/yellow/orange/black/blue/purple/white camouflage/green camouflage

CE EN 12402-3:2006 IMO Res.MSC 81(70) as amended

INFLATABLE LIFEJACKET REF: CQYB/II-150N



Description:

Inflatable lifejacket CQYB Series is developed and produced to the latest requirements of SOLAS, LSA, and MSC.81 (70) and partial product approved by CE, CCS and EC.; Air chamber:Double, Inflation type:automatic+manual
Buoyancy:≥150N CO2 weight:33g Angle in water face plane angle≥40°, trunk angle≥30°
Freeboard:≥120mm
Inflation time:≤5s
Floating duration:≥24h
Buoyancy loss after 24h ≤5%
Ambient temperature:-30-65°C

Materials: Inflatable Chamber Material :0.15mmTPU Film 210D Stick a Polyether + TPU(Double) Lifejacket Cover Fabric :300D Elater 23X20 Polyester Fabric

Weight: 1.2kg

Sizes: 62x30cm

Colours: red/yellow/orange/black/bule/purple/white camouflage/green camouflage

CE EN 12402-3:2006 IMO Res.MSC 81(70) as amended

INFLATABLE LIFEJACKET REF: CQYB/ I -150N



Description:

Inflatable lifejacket CQYB Series is developed and produced to the latest requirements of SOLAS, LSA, and MSC.81 (70) and partial product approved by CE, CCS and EC.; Air chamber single, Inflation type:automatic+manual, Buoyancy:≥150N
CO2 weight:33g, Weight:≤1kg, Angle in water face plane angle≥40°, trunk angle≥30°
Freeboard:≥120mm, Inflation time:≤5s, Floating duration:≥24h, Buoyancy loss after 24h≤5%
Ambient temperature:-30-65°C, Materials: Inflatable Chamber Material :0.15mmTPU Film 210D Stick a Polyether + TPU(Double), Lifejacket Cover Fabric :300D Elater 23X20 Polyester Fabric

Weight: 1kg

Sizes: 48x33cm

Colours: red/yellow/orange/black/bule/purple/white camouflage/green camouflage

CE EN 12402-3:2006

INFLATABLE LIFEJACKET REF: CQYB/KN-150N



Description:

Inflatable lifejacket CQYB Series is developed and produced to the latest requirements of SOLAS, LSA, and MSC.81 (70) and partial product approved by CE, CCS and EC.; Air chamber:Double, Inflation type:automatic+manual, Buoyancy:≥150N
CO2 weight:33g, Weight:≤1.3kg; Angle in water face plane angle≥40°, trunk angle≥30°
Freeboard:≥120mm, Inflation time:≤5s, Floating duration:≥24h, Buoyancy loss after 24h≤5%,
Ambient temperature:-30-65°C

Materials: Inflatable Chamber Material :0.15mmTPU Film 210D Stick a Polyether + TPU(Double), Lifejacket Cover Fabric :300D Elater 23X20 Polyester Fabric

Weight: 1.3kg

Sizes: 53x30cm

Colours: red/yellow/orange/black/bule/purple/white camouflage/green camouflage

CE EN 12402-3:2006

INFLATABLE LIFEJACKET

REF: CQYB/KN-150N



Description:

Inflatable lifejacket CQYB Series is developed and produced to the latest requirements of SOLAS, LSA, and MSC.81 (70) and partial product approved by CE, CCS and EC.; Single Air chamber with foam, Inflation type: automatic+manual, Buoyancy: $\geq 150\text{N}$ (air chamber) & 75N (foam), CO₂ weight: 33g, Weight: $\leq 1.2\text{kg}$, Angle in water face plane angle $\geq 40^\circ$ trunk angle $\geq 30^\circ$, Freeboard: $\geq 120\text{mm}$, Inflation time: $\leq 5\text{s}$, Floating duration: $\geq 24\text{h}$, Buoyancy loss after 24h $\leq 5\%$, Ambient temperature: -30 to 65°C

Materials: Inflatable Chamber Material : 0.15mm TPU Film 210D Stick a Polyether + TPU (Double), Lifejacket Cover Fabric : 300D Elater 23X20 Polyester Fabric

Weight: 1.2kg

Sizes: 70x68cm

Colours: red/yellow/orange/black/blue/purple/white camouflage/green camouflage

CE EN 12402-3:2006

INFLATABLE LIFEJACKET

REF: CQYB/IV-110N



Description:

Inflatable lifejacket CQYB Series is developed and produced to the latest requirements of SOLAS, LSA, and MSC.81 (70) and partial product approved by CE, CCS and EC.; Inflation type: automatic+manual, Buoyancy: $\geq 110\text{N}$, CO₂ weight: 24g, Weight: $\leq 0.6\text{kg}$, Inflation time: $\leq 5\text{s}$, Floating duration: $\geq 24\text{h}$, Buoyancy loss after 24h $\leq 5\%$, Ambient temperature: -30 to 65°C

Materials: Inflatable Chamber Material : 0.15mm TPU Film 210D Stick a Polyether + TPU (Double) Lifejacket Cover Fabric : 300D Elater 23X20 Polyester Fabric

Weight: 0.6kg

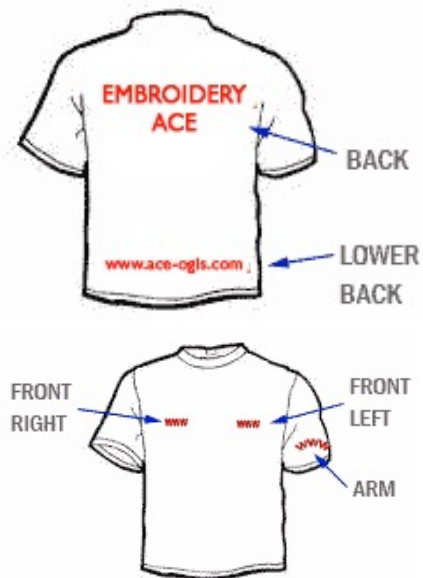
Sizes: 58x10cm

Colours: red/yellow/orange/black/blue/purple/white camouflage/green camouflage

CE

LOGO PRINTING OR EMBROIDERY

REF : LOGO



Logo on Clothe, Helmet and Bags

Embroidery
Printing

1 to 5 colors

Minimum Order Quantity : 20 pcs / Ref.

COMMENTS

Catalogue no-exhaustive, we distribute a full range of safety work equipments, please don't hesitate to ask us your specific product





**ACE
INTERNATIONAL**

Suzhou Office (Administration)

Baodai xi road 5188, Xukou town
Suzhou, China, code: 215464

Shanghai Office (Showroom)

N.1030 Yan an Xi Road, Building 16, Room 704
Shanghai, China, code: 200000